

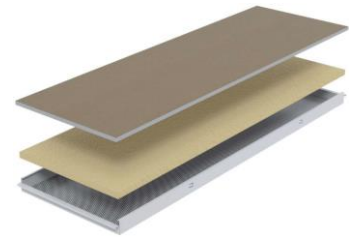


Product description

The heavy-duty panel is a solution for office floors and large partitioned areas. EC2 L panels are self-supporting and rest on a visible C-rail framing.

The panels are made up of an acoustic complex combining absorption (mineral wool) and insulation (plasterboard). These ceiling solutions prevent the transmission of noise between adjacent rooms.

The panels, with sharp, abutting edges, have Z-shaped folds at each end to rest on the load-bearing profiles. A safety fold is provided at the end to ensure that the panels are held securely on the framing. The panels surface is the same as the supporting profiles. The complex can be cut to fit technical equipment at the factory.



Use

Office floors, meeting rooms requiring lateral insulation.



Materials

Galvanized steel 5/10 to 8/10.
Depending on the width of the panels

Other materials on request



Dimensions

Standard width 300 / 600 / 675 mm
Other width on request
Length within the limit of self-supporting
(675 x 1800 mm maximum)



Sharp corner



Colors

- Pre-painted White 137 (~ RAL 9003)
- Post-painted, Polyseter powder coating RAL :



- Any other RAL colour on request



Light reflection

CSTB report EMI 18-26077242-1 :
Up to 88%, post painted RAL 9016
Summary in the colors section of the catalogue



Perforations

Standard :

On request:



11% Ø 1.5 M



2% Ø 0.8 U



22% Ø 1.5 M



16% Ø 2.5 U



Non perforated



Bending in perforation



Longitudinal perforation



Stopped 4 sides

Bespoke perforation ? Consult us !



Options

- Special cut-outs for lighting and HVAC equipment on request
- Cooling ceiling



Installation method

All special profiles available on request

Installation in accordance with DTU 58.1

Frames:

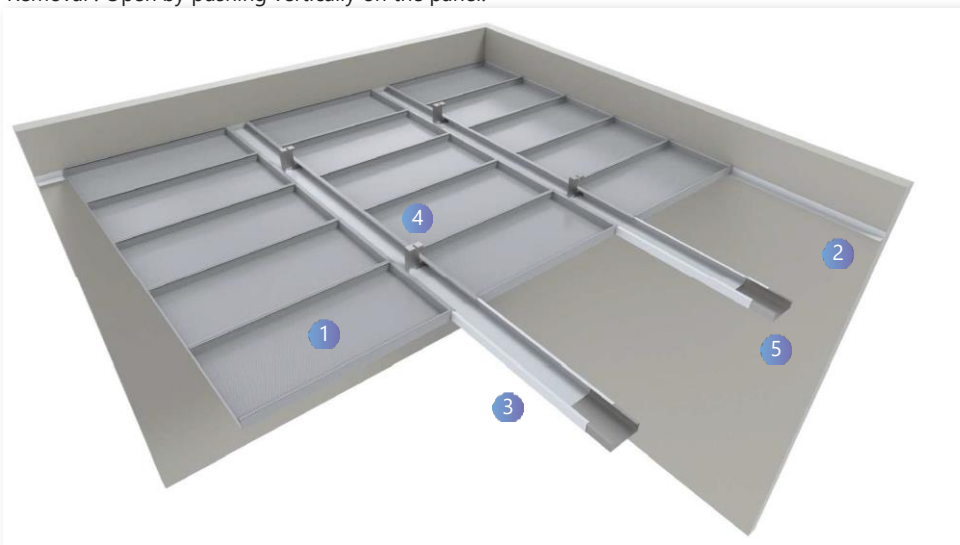
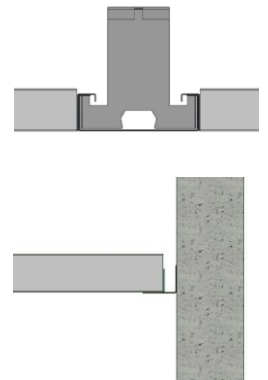
Panels laid on C rails (various widths, with or without shadow gap)

Hanging positioned at 1200 mm centres, starting 300 mm from the wall.

Joining clips between C rails for perfect framing alignment.

Edges : Panels installed on single angle or hollow joint.

Removal : Open by pushing vertically on the panel.



- 1 EC2 BRZ Panel
- 2 REC L Edge corner
- 3 PREC C C-bandraister
- 4 SUSP CC-bandraister hanger
- 5 C RACC CC Bandraister connector



Fire

Reaction to fire (according to EN 13501-1)

Euroclass A1 for the following products:

- non-perforated pre-painted panel
- pre-painted panel with non-woven fleece or surfaced rock wool lining

Euroclass A2-s1,d0 for products:

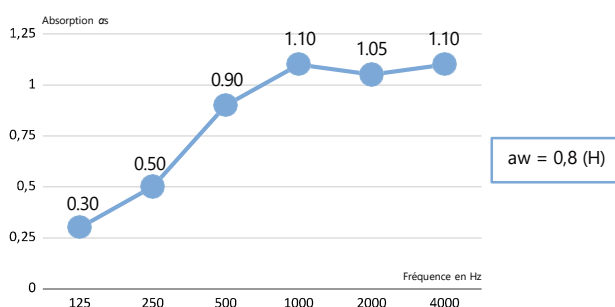
- Post-lacquered panels with or without lining



Acoustics

Sound absorption measured in accordance with NF EN ISO 354. Acoustic certificates available on request.

Perforation 11% + Rockwool 30 mm + plasterboard 13 mm



Cleaning

Metal ceilings are resistant and easy to clean.

For dust : Dry clean with a soft cloth or Hoover with a soft bristle brush.

For stains : Clean with a damp cloth soaked in a non-abrasive cleaner diluted in water.

For persistent, greasy stains, diluted alcoholic solutions can be used.



Environment

100% recyclable ceiling, odourless, easy to maintain and does not generate dust, particles, or vapour.

No VOC or formaldehyde emissions.
(Classification A for LR30)

ESDS sheet available on the INIES website (www.inies.fr)

